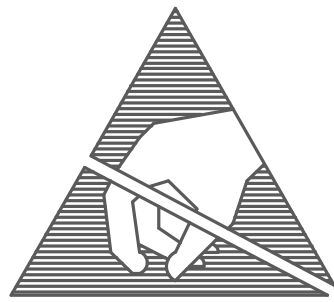


NOTES: (UNLESS OTHERWISE SPECIFIED)

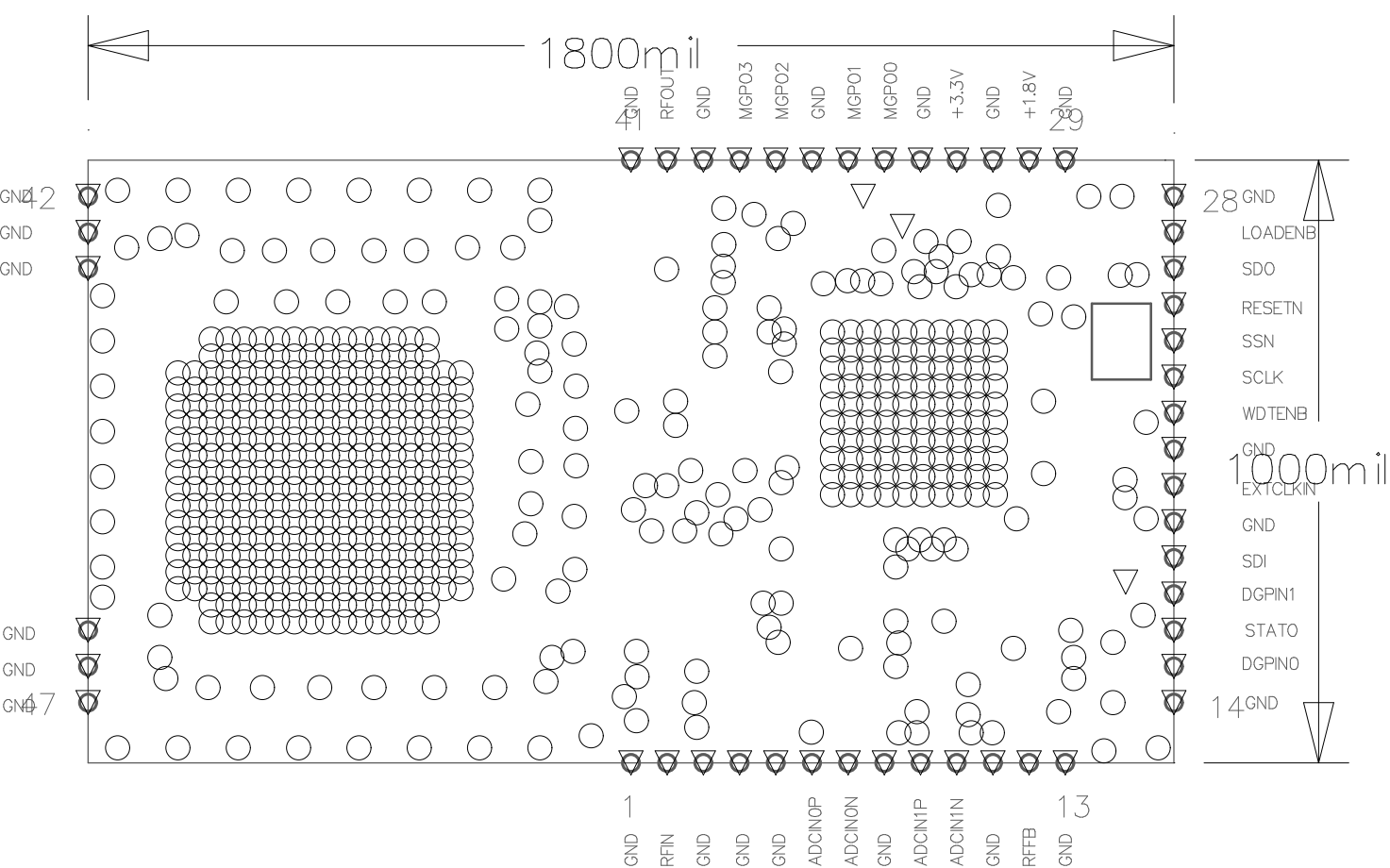
ALL PROCESSES MUST BE ROHS COMPLIANT.



CAUTION

THIS ASSEMBLY INCORPORATES
STATIC SENSITIVE DEVICES
ASSEMBLY AND HANDLING MUST BE DONE AT AN
APPROVED STATIC FREE STATION

CAUTION



ASSY TOP

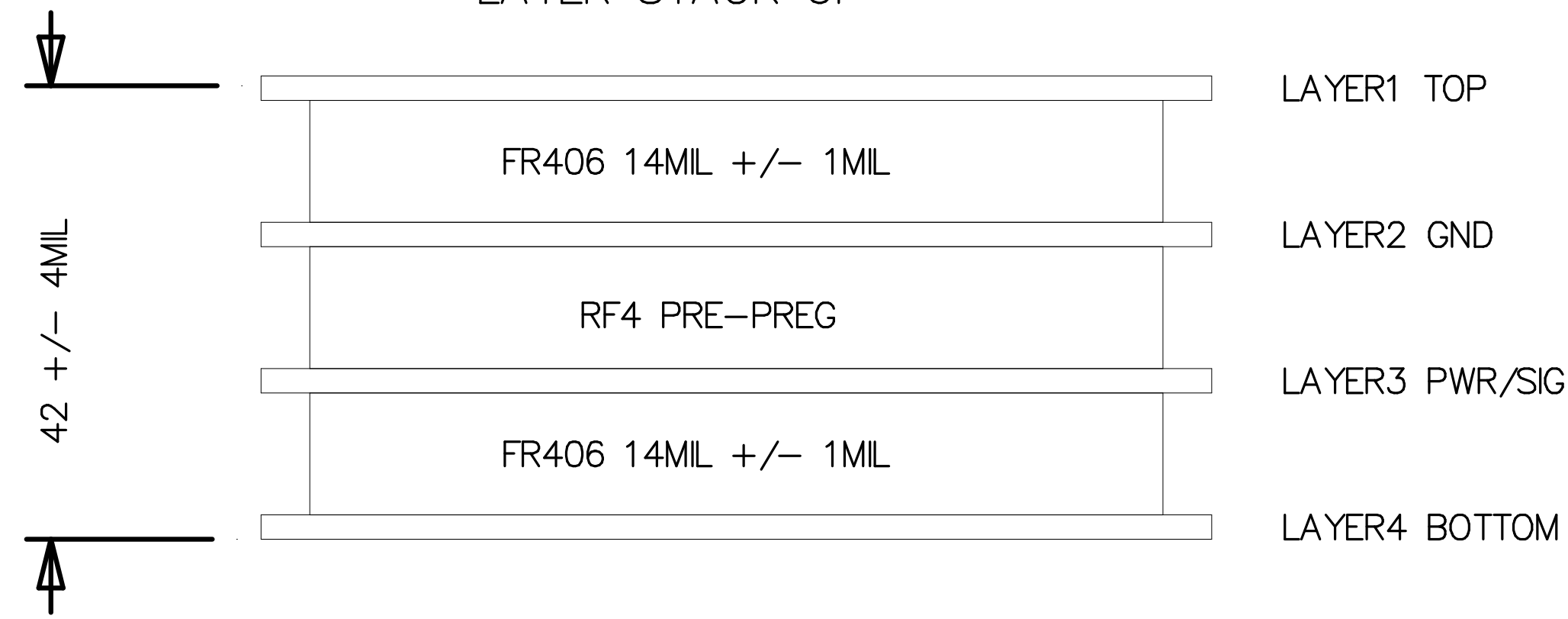
SCINTERA

SC1894-DB200A FAB DRILL DRAWING

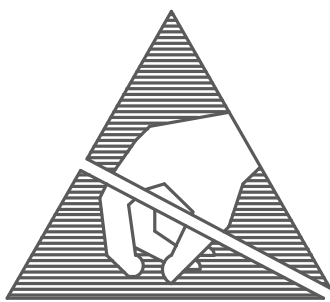
(RDB3.1 REV3)

- 1) FINISHED BOARD THICKNESS TO BE 42 MILS +/- 10%.
- 2) SOLDERMASK TO BE LPI, COLOR : GREEN, BOTH SIDES.
- 3) PLATING: IMMERSION GOLD OVER ELECTROLESS NICKEL.
– ALL LAYERS USE 1 OZ COPPER.
- 4) SILKSCREEN: TOP SIDE, COLOR: WHITE
- 5) SEE DRILL CHART FOR FINISHED HOLE SIZES.
- 6) HOLE TOLERANCE IS +/- 3 MILS UNLESS OTHERWISE SPECIFIED.
- 7) THIS IS A 4 LAYER BOARD.
- 8) TRACE WIDTHS IN ARTWORK ARE FINISHED SIZES. DO NOT DEVIATE
WITHOUT PRIOR AUTHORIZATION FROM SCINTERA.
- 9) BOW AND TWIST: .75% MAX ALLOWABLE.
- 10) FABRICATE PER IPC-6012 CLASS 2 (LATEST REVISION) UNLESS OTHERWISE SPECIFIED.
- 11) REMOVE ALL BURRS AND SHARP EDGES.
- 12) VENDOR SHALL PERFORM FULL NETS LIST TEST – EXTRACT NETS LIST FROM GERBER.
- 13) FINISHED BOARD SHALL BE RoHS COMPLIANT.
- 14) COPPER TO THE EDGE BY DESIGN. NO RELIEF.
- 15) REMOVE UNUSED PADS.
- 16) TENT ALL 10 MIL VIAS USING SOLDERMASK ON THE LAYER4.

LAYER STACK UP

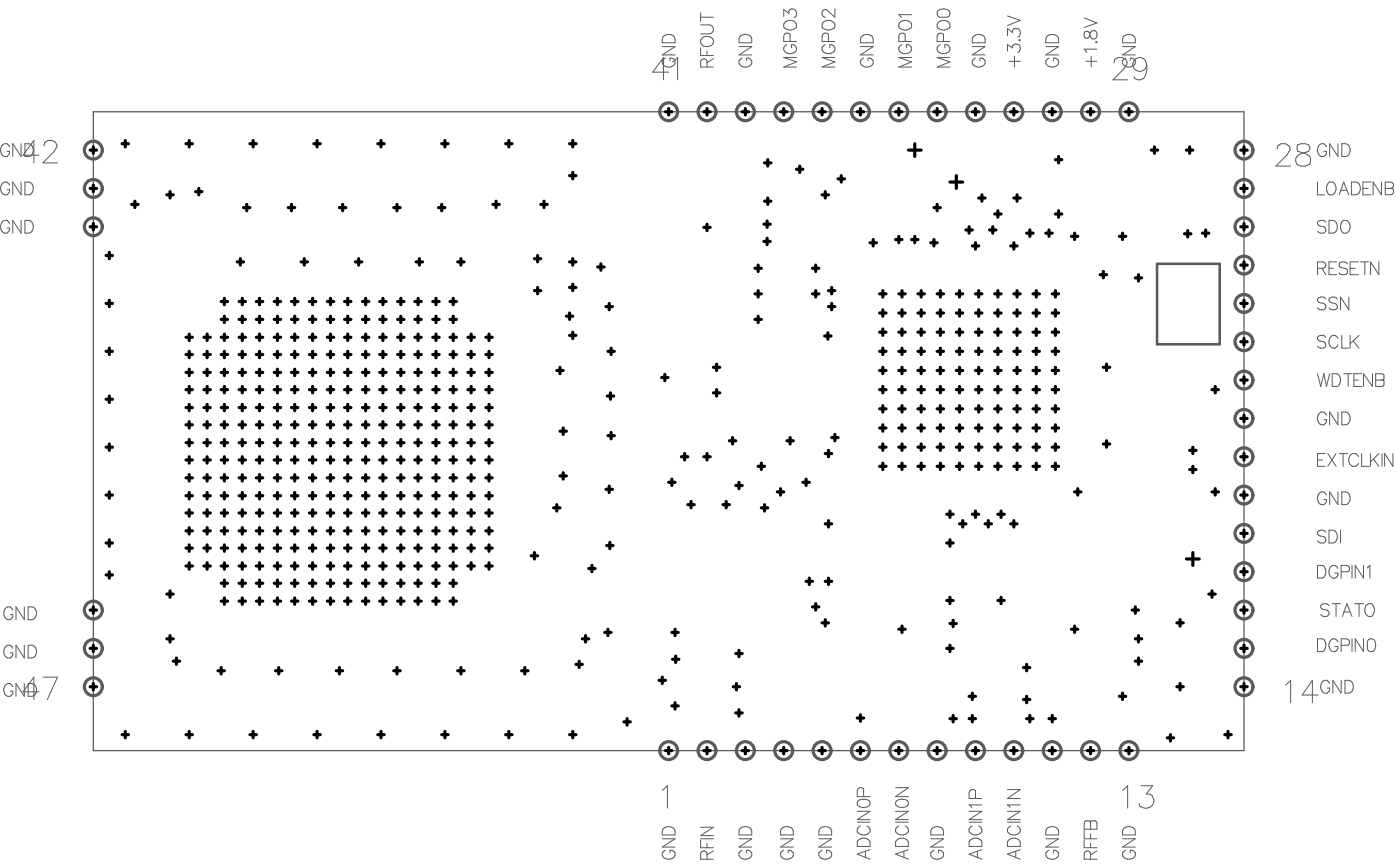


ALL PROCESSES MUST BE ROHS COMPLIANT.



CAUTION
THIS ASSEMBLY INCORPORATES
STATIC SENSITIVE DEVICES
ASSEMBLY AND HANDLING MUST BE DONE AT AN
APPROVED STATIC FREE STATION

CAUTION



ASSY TOP